



**SOT-89 Encapsulate Three Terminal Voltage Regulator**

**CJ79L05** Three-terminal negative voltage regulator

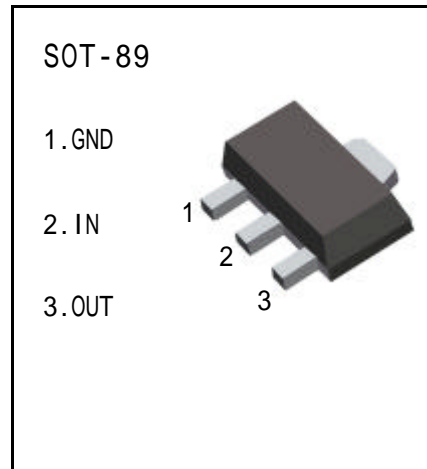
**FEATURES**

Maximum Output current

$I_{OM}$ : 0.1 A

Output voltage

$V_o$ : -5 V



**ABSOLUTE MAXIMUM RATINGS ( Operating temperature range applies unless otherwise specified )**

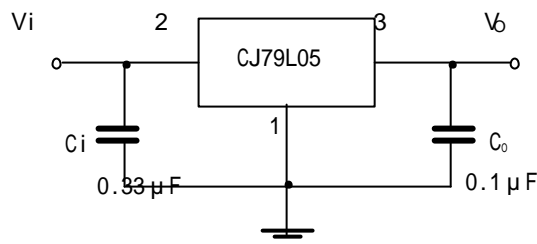
Parameter	Symbol	Value	Unlts
Input Voltage	$V_i$	-30	V
Operating Junction Temperature Range	$T_{OPR}$	0—+125	
Storage Temperature Range	$T_{STG}$	-55—+150	

**ELECTRICAL CHARACTERISTICS**

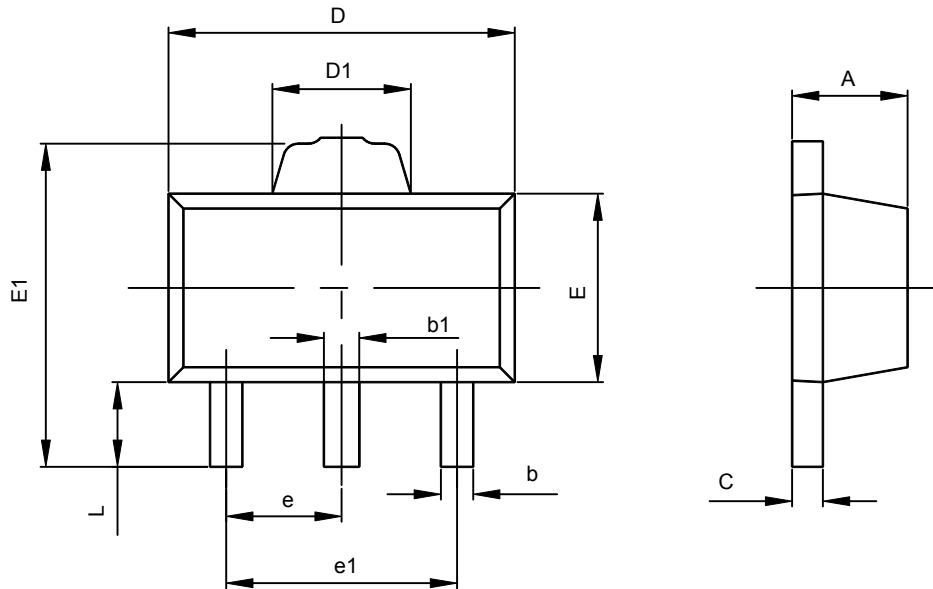
( $V_i=10V, I_o=40mA, 0 < T_j < 125$  ,  $C_1=0.33 \mu F, C_o=0.1 \mu F$  , unless otherwise specified )

Parameter	Symbol	Test conditions	MIN	TYP	MAX	UNIT
Output voltage	$V_o$	$V_i=-10V, I_o=40mA$	-4.8	-5.0	-5.2	V
Load Regulation	$V_o-I_o$	$V_i=-10V, I_o=1mA\sim 100mA$		20	60	mV
Line regulation	$V_o-V_i$	$V_i=-7V\sim -20V, I_o=40mA$		15	150	mV
Quiescent Current	$I_q$	$V_i=-10V, I_o=40mA$			6	mA
Output Noise Voltage	$V_N$	10Hz f 100KHz, $V_i=-10V, I_o=40mA$		40		uV
Ripple Rejection	RR	$V_i=-8V\sim -18V, I_o=40mA, e_i=1V_{P.P}, f=120Hz$	41	49		dB

**TYPICAL APPLICATION**



## SOT-89-3L PACKAGE OUTLINE DIMENSIONS



Symbol	Dimensions In Millimeters		Dimensions In Inches	
	Min	Max	Min	Max
A	1.400	1.600	0.055	0.063
b	0.320	0.520	0.013	0.020
b1	0.360	0.560	0.014	0.022
c	0.350	0.440	0.014	0.017
D	4.400	4.600	0.173	0.181
D1	1.400	1.800	0.055	0.071
E	2.300	2.600	0.091	0.102
E1	3.940	4.250	0.155	0.167
e	1.500TYP		0.060TYP	
e1	2.900	3.100	0.114	0.122
L	0.900	1.100	0.035	0.043